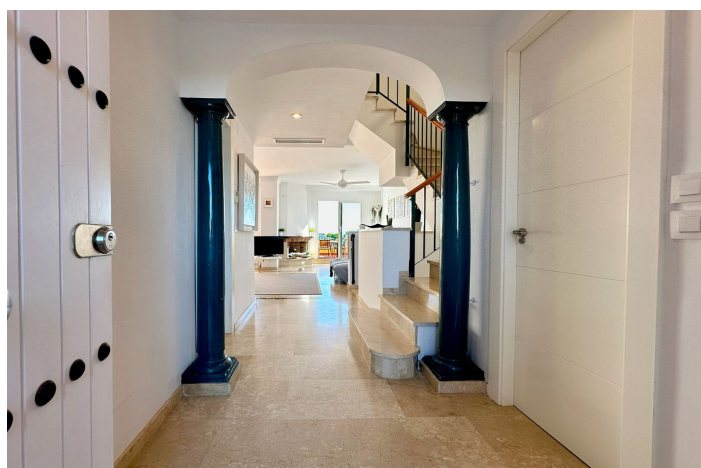


# Duplex for sale in Manilva, Manilva

345,000 €

Reference: R4831531 Bedrooms: 3 Plot Size: 60m<sup>2</sup> Build Size: 250m<sup>2</sup> Terrace: 60m<sup>2</sup>



## Costa del Sol, Manilva

Spectacular Duplex with stunning sea and mountain views, in Manilva.

This magnificent duplex, located in the sought-after area of La Vizcaronda in Manilva, Malaga, offers a perfect space for those looking for a spacious and well-located home. With a total built area of 250m<sup>2</sup> and 213m<sup>2</sup> of interior space, this property guarantees privacy and is ideal for families or as a second home.

The property boasts three spacious bedrooms, two full bathrooms and a guest toilet, ensuring comfort for all residents. The master bedroom enjoys an en-suite bathroom, with beautiful sea and mountain views, and a private terrace to enjoy the morning sun. The kitchen is fully equipped and refurbished with direct access to a spacious garden, ideal for families with children or pets. Interior features include marble floors, hot and cold central heating, and double-glazed windows, ensuring excellent comfort in winter and summer.

The duplex is fully furnished and features a design that maximises the panoramic sea and mountain views. The 60m<sup>2</sup> private terrace is an exceptional space to enjoy the tranquillity of the natural surroundings. Furthermore, the property is situated in a gated community with several communal swimming pools and tropical gardens. Ensuring an atmosphere of disconnection and relaxation.

It also has a spacious basement with space for two cars, a gymnasium, a leisure area, etc.

The location is unbeatable, with proximity to beaches, golf courses, ports and schools. It is also just a few minutes away from leisure areas such as bars and playgrounds, making it an ideal place for the whole family. The property is in excellent condition, ready to move into, and offers unrivalled sea, mountain, garden and pool views, providing a unique living experience on the Costa del Sol.

**Features:**

**Features**

Covered Terrace  
Near Transport  
Private Terrace  
Marble Flooring  
Double Glazing  
Fitted Wardrobes

**Views**

Sea  
Mountain  
Panoramic  
Country  
Pool

**Pool**

Communal

**Garden**

Private  
Easy Maintenance

**Orientation**

South East

**Setting**

Urbanisation  
Close To Town  
Close To Schools  
Town

**Furniture**

Fully Furnished

**Security**

Alarm System

**Climate Control**

Air Conditioning  
Cold A/C  
Hot A/C

**Condition**

Excellent

**Kitchen**

Fully Fitted

**Parking**

Garage  
Private  
Covered  
More Than One

**Category**

Resale