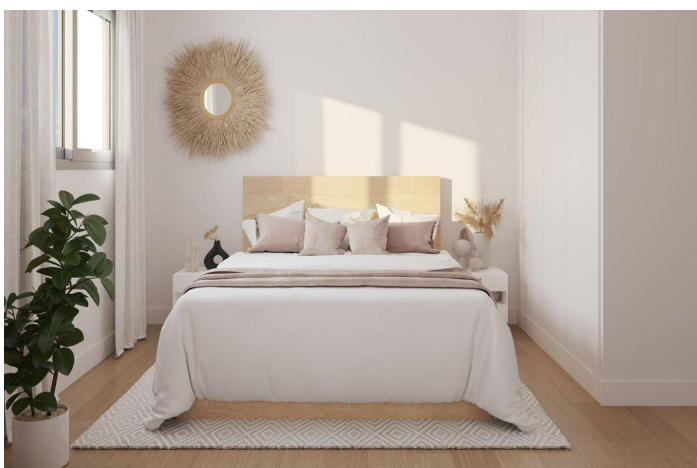
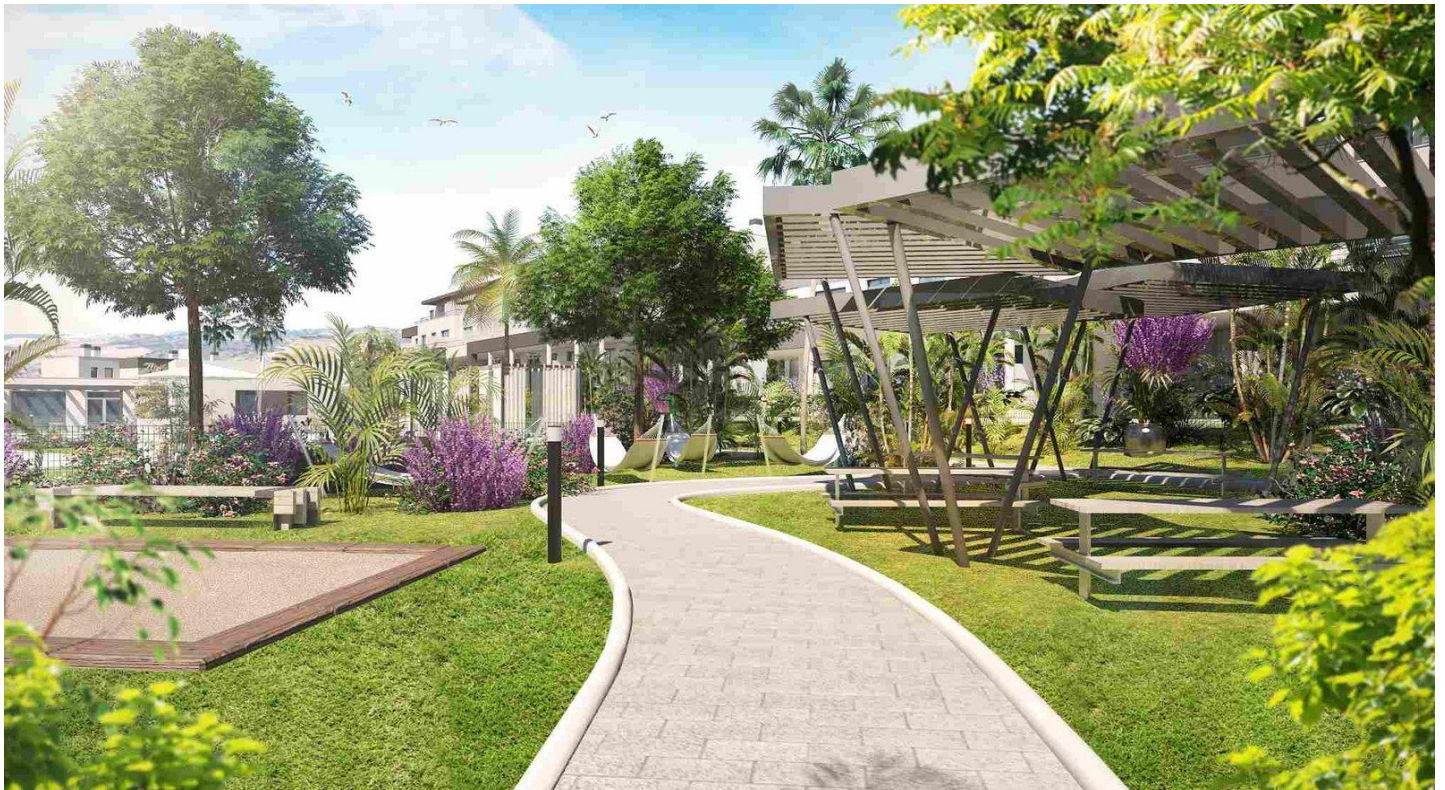


Apartment for sale in Estepona, Estepona

388,000 €

Reference: RS10409 Bedrooms: 3 Bathrooms: 2 Build Size: 97m² Terrace: 27m²



Costa del Sol, Estepona

NEW DEVELOPMENT NEXT TO ESTEPONA

Exclusive development of 115 properties from 1 to 4 bedrooms, with a choice of spectacular penthouses or ground floor apartments with private garden. All the properties have large windows connected to generous terraces. All of them also have parking and storage room.

Impressive communal areas: 2 swimming pools for adults and children, gymnasium and social club, surrounded by extensive gardens. Located in an incomparable natural environment, every detail has been taken care of to achieve a concept of "open spaces", where functionality and its south-facing orientation make light the main protagonist.

Chosen by Forbes magazine as one of the 10 best residential developments currently being marketed in Spain.

Situated in a privileged location, next to Estepona, just a few minutes from the beach and very close to the Valle Romano golf course. Only 10 minutes from Marbella, and 45 minutes from Malaga International Airport.

You can enjoy a real quality of life, with an average annual temperature of 20° and more than 320 days of sunshine a year. You will enjoy a wide variety of golf courses, kilometres of tranquil coastline, sun, nature, and the gastronomy of the area, from its international restaurants to its welcoming local cuisine.

It perfectly combines the tradition of its cobbled streets of whitewashed houses and patios with their pots of colourful flowers, with modernity and the best leisure facilities on the Costa del Sol. It boasts a privileged location between the sea and the mountains, making it one of the most attractive tourist destinations in the province.

Features:

Features

Gym
Gated
Terrace: 27 Msq.
Communal Pool
Near Bus Route
Elevator/Lift
Double Bedrooms: 3
Heating: Yes, Air Conditioning: Yes
Near Schools
Useable Build Space: 82 Msq.
Near Golf / Golf Resort Property
Near Childrens Parks
Location: Coastal, Urbanisation
Beach: 2000 Meters
Near Commercial Center
Near Trees

Energy Rating

B

CO2 Emission Rating

B