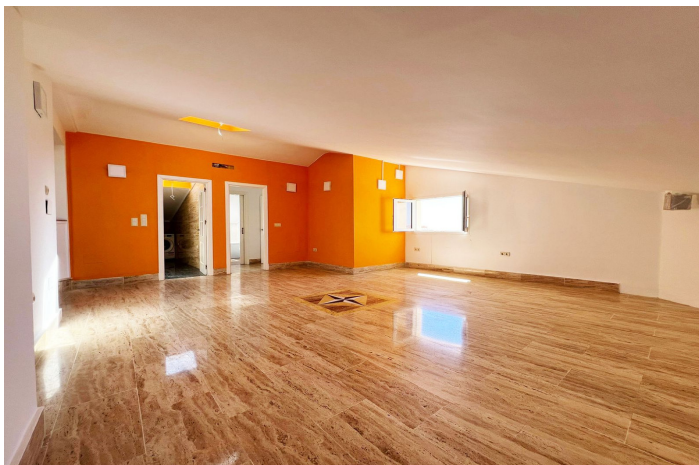


Bovenverdieping Appartement te koop in Benalmadena
Costa, Benalmádena

325.000 €

Referentie: R4828483 Slaapkamers: 1 Badkamers: 1 Perceelgrootte: 85m² Terras: 8m²



Costa del Sol, Benalmadena Costa

This stunning 1-bedroom, 1-bathroom penthouse offers a rare opportunity to own a piece of paradise just 200 meters from the beach. Located in a well-maintained community, the property boasts breathtaking sea views from the private terrace, perfect for enjoying sunsets or morning coffee. The apartment includes a designated parking space for convenience, and the community features vast, landscaped gardens and a large swimming pool, creating a serene and luxurious environment for residents.

While the apartment requires partial renovation, it presents an excellent opportunity to customize the space to your tastes. With a bright, open layout, the potential to create a modern coastal retreat is undeniable. The location, just steps away from the beach and local amenities, enhances the property's appeal, making it an ideal vacation home or investment.

High rental demand in the area ensures excellent rental potential, whether for short-term holiday lets or long-term tenants. Don't miss out on this unique opportunity to invest in a penthouse with incredible sea views, close proximity to the beach, and all the features for a perfect coastal lifestyle.

Kenmerken:

Extra's

Lift
Nabij vervoer
Privé Terras
Marmeren vloeren
Dubbele beglazing
Paddle tennissen
Tennisbaan

Uitzicht

Zeezicht
Mountain Bekeken

Zwembad

Gemeenschappelijk zwembad
Children`s Pool

Tuin

gemeenschappelijke tuin

Voorzieningen

Elektriciteit
Drinkwater

Zonorientatie

South

Ligging

Dichtbij golfbaan
Dichtbij haven
Urbanisatie
Dichtbij zee
Dicht bij winkels
Dichtbij stad
Dichtbij scholen

Meubilering

Ongemeubileerd

Beveiliging

Omheind complex

Categorie

Vakantiehuis
Investering

Klimaatbeheersing

Airconditioning

Huidige Staat

Goede conditie

Keuken

Volledig ingerichte keuken

Parkeergelegenheid

ondergrondse parkeergarage