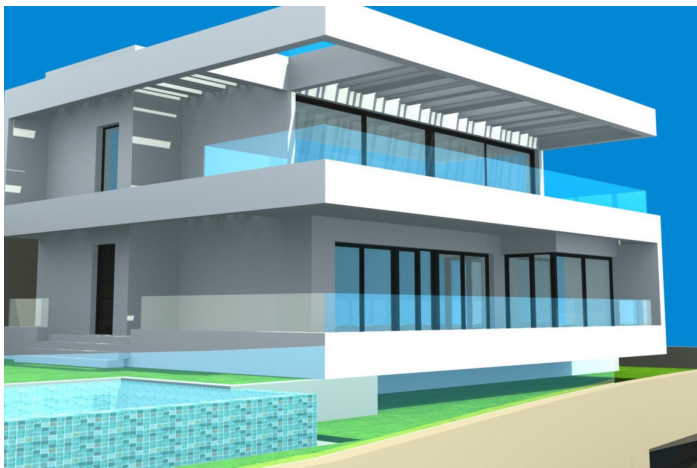
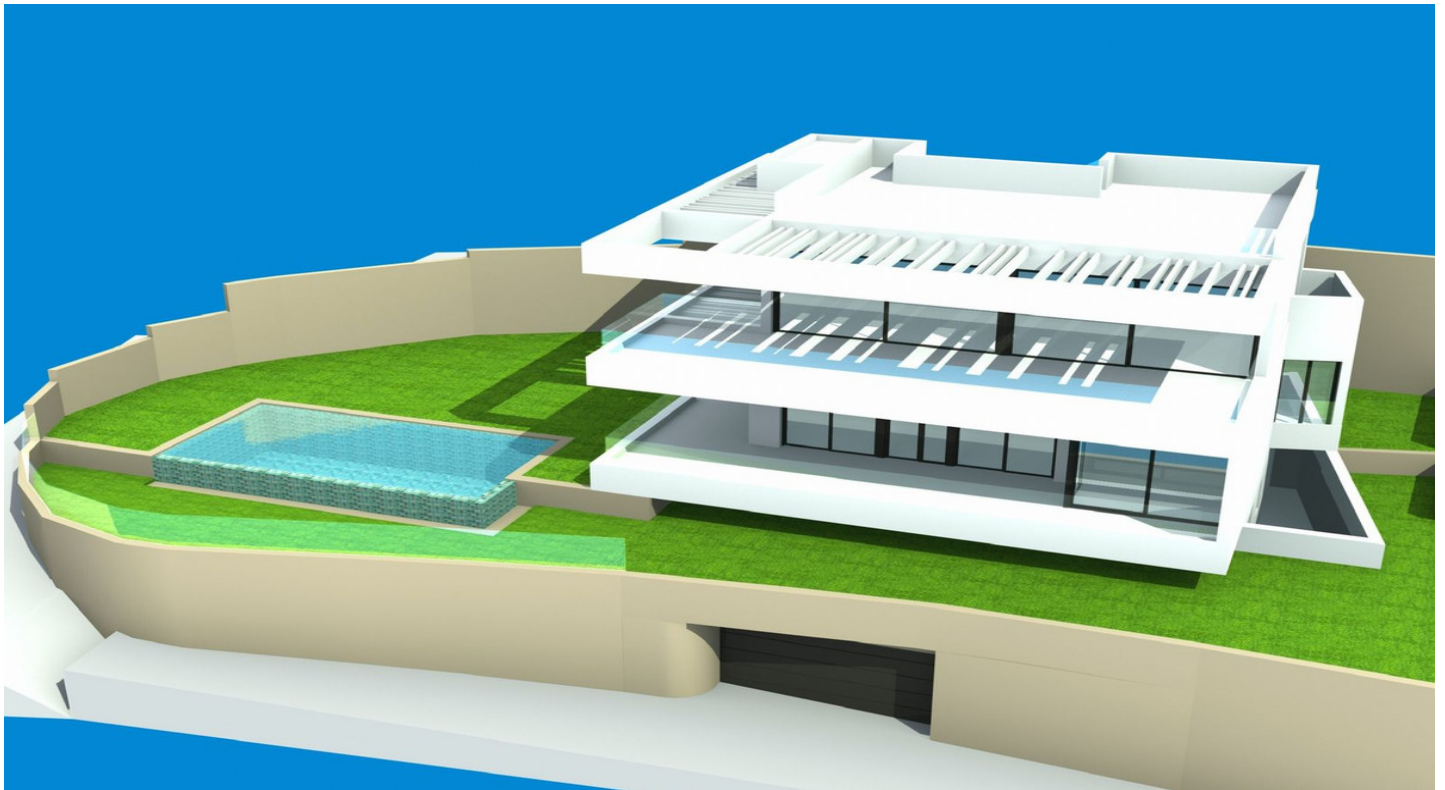


Terreno Urbano en venta en Mijas Pueblo, Mijas

389.500 €

Referencia: R4362499 Terreno: 675m² Construido: 216m²



Costa del Sol, Mijas Pueblo

Great investment opportunity with an amazing sea view!

This flat plot, sold with plans and drawings of a beautiful contemporary villa designed and approved by a well-known precedent-creating architect and developer is a unique opportunity for every investor. It has 6 double bedrooms, 5 bathrooms, an elevator, a garage for 3 cars, a garden and swimming pool with views over the Costa del Sol. The plot with plan for the villa is located in a sought after gated community just a 15 minute drive from the airport, 10 minutes from the coast, Mijas Pueblo and Fuengirola and 15 minutes walking distance from two restaurants and a well known, beautiful tennis and padel club. The elderly architect/developer has arranged and paid for all the paperwork and permits and is waiting for a developer to take over. There is nothing comparable on the market at the moment, but research shows that this villa at this location can yield around 1.5 million euros after construction. Short-term rental yields about 3k per week in low season and 5k per week in high season. This plot is located next to another, somewhat larger plot, which also comes with approved drawings and technical calculations of a state-of-the-art villa. In addition, there is a commercial plot without planning permission where a nursing home would fit well, given the demand for these types of facilities. After all, the plots are elevated on a hill with a magnificent view, in the middle of nature but in a gated community for maximum security. Ask for more information about the plots together.

Características:

Características

Terraza Cubierta
Ascensor
Terraza Privada
Baño En-Suite
Doble acristalamiento
Armarios Empotrados
Sala de Juegos

Vistas

Vistas al Mar
Vistas a Montaña
Vistas Panorámicas
Vistas al Campo
Vistas a Jardín
Vistas a Piscina

Piscina

Piscina Comunitaria
Piscina Privada

Seguridad

Recinto Cerrado

Categoría

Inversion
Lujo
Con Permiso de Planificación
Contemporáneo

Orientación

South

Posición

Urbanización
Suburbano
Campo
Pueblo de Montaña

Muebles

Opcionales

Aparcamiento

Párking Subterráneo
Garaje
Párking en Calle
More Than One

Climatización

Aire Acondicionado
A/A Frio
A/A Caliente
Chimenea

Estado

Excelente estado de conservación

Jardin

Jardín Privado

Servicios Públicos

Electricidad